

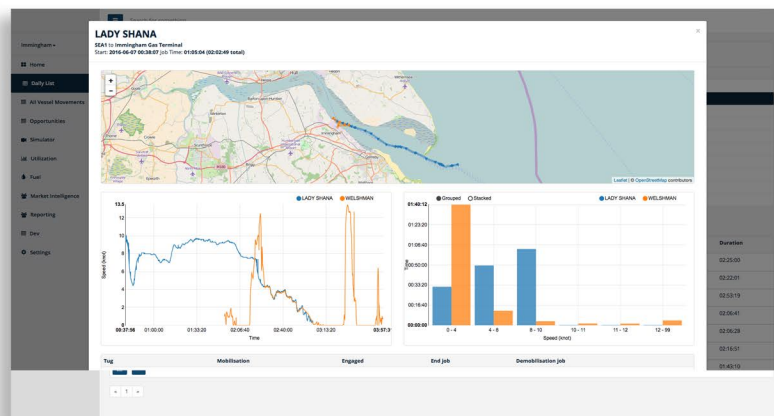
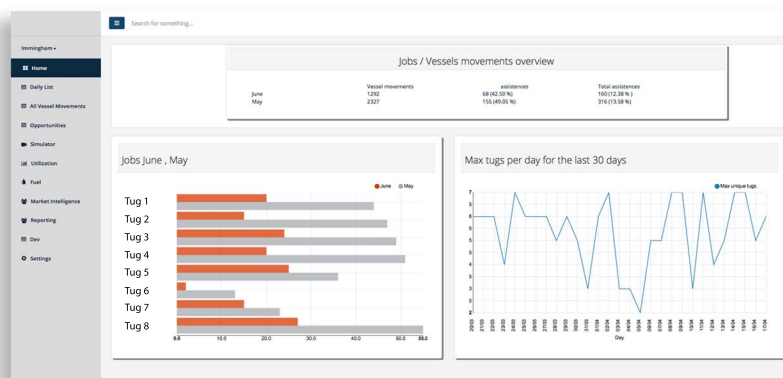


TUG ANALYTICS

We know what your tugs are doing.

Tug Monitoring & Analytics

Tug Analytics helps tugboat operators to reduce fuel burn, archives all jobs and calculates the utilization of the entire harbour tug fleet. Tug Analytics makes sure that all invoices are billed properly and also keeps an eye on the activities of the competition.



This screenshot shows a detailed view of a specific tug job for the vessel 'LADY SHANA'. It includes a map of the tug's path, a speed and distance graph, and a bar chart showing the duration of different job phases (Mobilization, Engaged, End job, Demobilization job). The 'Duration' section on the right lists the time taken for each phase.

Start Time	Tugs	Vessel Name	IMO	From	To	Duration
2016-05-01	1	MV LARIS	9146786	SEAT	SEAT	02:58:53
2016-05-02	1	CARL SWANSON	9408205	SEAT	King George Dock	03:11:50
2016-05-03	1	BBC MARSHLAND	9433208	Immingham inner dock	SEAT	02:24:38

FEATURES

- Track & archive all tugjobs (including competition) in realtime
- Track all large vessels coming and leaving your port with or without assistance
- Archive all tugjobs and portcalls as a movie clip
- Report utilization of own and competitor fleet
- Get exact timestamps for mobilization, demobilization and on-the-job times
- Measure max, min and average speed and distance at mobilization, demobilization and on-the-job
- Make use of weather, current and tidal observations
- Estimate real and optimal fuel consumption
- Relate size of assisted ship to bollard pull of the tug
- Integrate data in your existing enterprise systems or download into Excel

BENEFITS

- Optimize tug speed to minimize tug fuel consumption
- Avoid fuel theft
- Find new business opportunities (first time vessels/vessels without contracts)
- Compare AIS jobdata with inhouse billing data
- Archive and document every job for customer request or insurance claims
- Compare & benchmark utilization of own and competitor tugfleet
- Generate a sound data basis for new investment decisions to new tugs

For more informations on how to leverage TUG ANALYTICS Tool, contact our team!

www.maritimedatatypes.com | info@maritimedatatypes.com

